



MCM-W SERIES OVERVIEW

MCM-W series are complete and versatile solutions for the applications such as FTTx, CWDM, and carrier Ethernet. By the diversified speeds of 1,000Mbps and 10G, Xtramus provides standalone MCM-W products for different applications and can be applied according to your ideal network topology.

Xtramus' MCM-W series provide various interfaces such as UTP, SFP, SFP+, XFP and CX4. All these interfaces are developed to support the protocols such as 100Base-Tx, 100Base-Fx, 1000Base-T, 1000Base-X, 10GBase-T, 10GBase-LR, 10GBase-SR and 10GBase-CX4, thus making your network more complete and solid.

All MCM-W series are equipped with real-time LEDs which display the status of each port, thus allowing users to view network status easily.

MCM-W series provide an easy-to-access Management Webpage, allowing users to view system status, counters, and network statistics.

Also, MCM-W series support MIB Counter Report including counters such as Packet, Byte, Broadcast packet, Pause Frame, Length: 64 Bytes, Length: 65-127 Bytes, Length: 128-255 Bytes, Length: 256-511 Bytes, Length: 512-1023 Bytes, Length: 1024-1518 Bytes, Unicast packet, Multicast packet, CRC Error, IP Checksum Error, Under Size Packet, and Over Size Packet.

With various interfaces, MCM-W series provide different conversions between fibers and copper wires in 10G Ethernet.



FEATURES

- Diversified interfaces including SFP, SFP+, RJ45, XFP and CX4
- Supports 3R (Re-generation, Re-timing, Re-shaping) Performance for extending network cable coverage
- Supports Jumbo Frame
- Supports D/D (Digital Detection) functioned optical transceivers and overload protection
- MCM-W series support easy-to-use Management Webpage that allows users to view system status, counters, and network statistics
- Supports SNMP (Simple Network Management Protocol)
- Supports Link Loss Forwarding
- Supports DDMI (Digital Diagnostics Monitoring Interface), allowing users to view status such as Temperature, Supply Voltage, Tx Bias Current, Tx Power (dBm), and Rx Power (dBm).

KEY ADVANTAGES








- Fast connection with multi-function
- Provide reliable long-distance connection
- Port supported: SFP, SFP+, RJ45, XFP and CX4
- Small portable size case
- Plug and play without extra configuration

MAIN APPLICATIONS

- Media converter for network backbone
- Connection between fiber to copper or fiber to fiber 10G Ethernet equipment
- Providing protections against lightning and static electricity for Ethernet network and the network main system
- Providing additional network management options
- Can be applied in Telecommunication room, R&D laboratory, Data center, etc



MCM-W SERIES SPECIFICATION

Model								
Media Converter								
	MCM-7S81-W	MCM-8S22-W	MCM-8S23-W	MCM-8S82-W	MCM-8S62-W	MCM-8S33-W	MCM-8S83-W	
Interface Ports								
Interface	Port A	RJ45	SFP+	SFP+	RJ45	CX4	XFP	RJ45
	Port B	SFP	SFP+	XFP	SFP+	SFP+	XFP	XFP
Transfer Rate	1000 Mbps		10G	10G	10G	10G	10G	10G
Ethernet Mode	1000Base-T 1000Base-X	10GBase-LR 10GBase-SR	10GBase-LR 10GBase-SR	10GBase-LR 10GBase-SR 10GBase-T	10GBase-LR 10GBase-SR 10GBase-CX4	10GBase-LR 10GBase-SR	10GBase-LR 10GBase-SR	10GBase-T 10GBase-LR 10GBase-SR
Jumbo Frame	9KB							
System Control *								
System Control	➤ Transceiver Power ON/OFF ➤ Selectable Auto/Force Media Type ➤ System Upgrade (F/W, FPGA)				➤ Link Connection Mode: Slave/Segment ➤ Loopback *			
Device Status Report								
Status Report	➤ Information ➤ Link Status ➤ Temperature Detection				➤ Module Detection ➤ Fiber Module Detection ➤ Transceiver Overloading			
MIB Counter Report *								
Counter Report	➤ Packet ➤ Broadcast packet ➤ Length: 64 Bytes ➤ Length: 128-255 Bytes ➤ Length: 512-1023 Bytes ➤ Unicast packet ➤ CRC Error ➤ Under size packet				➤ Byte ➤ Pause Frame ➤ Length: 65-127 Bytes ➤ Length: 256-511 Bytes ➤ Length: 1024-1518 Bytes ➤ Multicast packet ➤ IP Checksum Error * ➤ Over size packet			
Hardware								
Power Source	External Power Adapter * 1 ➤ Input: AC 100 V ~ 240 V, 50 Hz ~ 60 Hz ➤ Output: DC 12 V							
Power Consumption	15W (without fiber module)							
Dimension	147 mm x 89 mm x 28 mm							
Weight	Approx. 400g							
Temperature	➤ Operating: 0°C ~ 40°C (32°F ~ 104°F)				➤ Storage: 0°C ~ 50°C (32°F ~ 122°F)			
Humidity (non-condensing)	➤ Operating: 0% ~ 85% RH				➤ Storage: 0% ~ 85% RH			

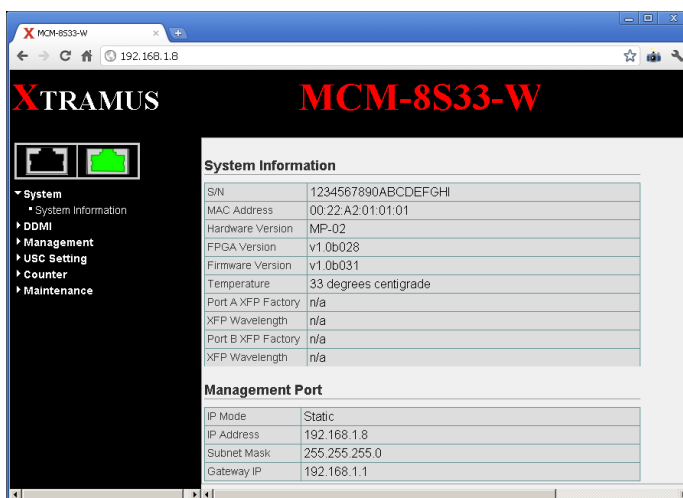
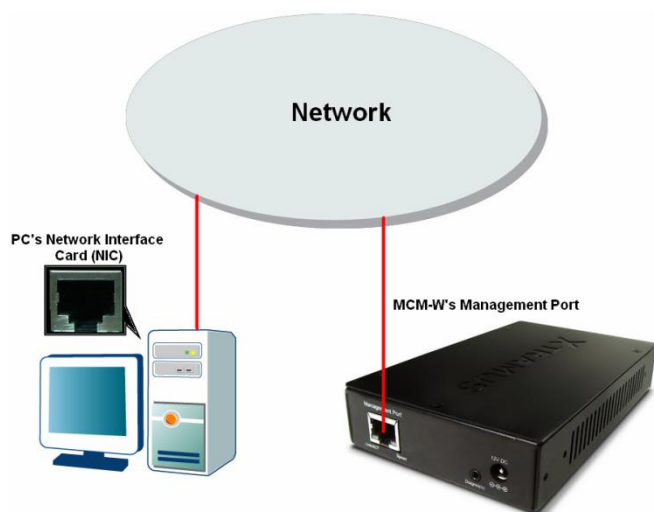
*MCM-7S81-W does not support Loopback functions.



MANAGEMENT WEBPAGE

MCM-W series are embedded with a Management Webpage, and can be accessed by connecting MCM-W's **Management Port** to the network which your PC is connected to, as shown in the figure down below.

MCM-W's Management Webpage allows users to configure test parameters, access counters, make system settings and upgrade system firmware.



RELATED PRODUCTS

MCS-2160 Chassis:

Chassis for Media Converter Platform



CONTACT INFORMATION

Website: www.xtramus.com

E-mail: Sales@xtramus.com

TS@xtramus.com

TEL: +886-2-8227-6611

FAX: +886-2-8227-6622