



## MCS-2160 OVERVIEW

MCS-2160 media converter chassis is a complete and versatile solution for the applications such as FTTx, CWDM, and carrier Ethernet. By the diversified speeds of 1,000Mbps and 10G, Xtramus provides different XC series module cards for different applications and can be applied according to your ideal network topology.

Combined with XC series module cards, MCS-2160 media converter chassis provide various interfaces such as UTP, SFP, SFP+, XFP, and CX4, which can support the protocols such as 100Base-Tx, 100Base-Fx, 1000Base-T, 1000Base-X, 10GBase-T, 10GBase-LR, 10GBase-SR and 10GBase-CX4, thus making your network more complete and solid.

Also, XC series module cards support MIB Counter Report including counters such as Packet, Byte, Broadcast packet, Pause Frame, packets of 64 Bytes, packets of 65~127 Bytes, packets of 128~255 Bytes, packets of 256~511 Bytes, packets of 512~1023 Bytes, packets of 1024~1518 Bytes, Unicast packet, Multicast packet, CRC Error, IP Checksum Error, Under size packet, and Over size packet.

All XC series module cards are equipped with real-time LEDs which display the status of each port, thus allowing users to view network status easily.

MCS-2160 media converter chassis provides an easy-to-access Management Webpage, allowing users to view system status, counters, upgrading firmware/FPGA and network statistics. Moreover, XC-CASC module card allows you to cascade multiple MCS-2160 chassis for managing these chassis at the same time.

With various interfaces, MCS-2160 provides different conversions between fibers and copper wires in 10G Ethernet.



## FEATURES

- Diversified interfaces including SFP, SFP+, UTP, XFP and CX4
- Supports 3R (Re-generation, Re-timing, Re-shaping) Performance for extending network cable coverage
- Supports Jumbo Frame
- Supports D/D (Digital Detection) functioned optical transceivers and overload protection
- Support easy-to-use Management Webpage that allows users to view system status, counters, upgrading firmware/FPGA and network statistics
- Multiple MCS-2160 chassis can be cascaded for system management
- Replaceable power modules for AC & DC power
- Optional Fan Tray (MCS-FANT-5) which can be placed under MCS-2160 chassis for ventilation
- Supports DDNS services (be available to uses the domain name for remote management), Syslog services, and Mail services
- Supports the management of SNMP/Telnet/SSH/Serial interface
- Supports temperature detection and protection
- The daughter board supports Link Loss Forwarding and DDMI

## KEY ADVANTAGES

- Fast connection with multi-function
- Provide reliable long-distance connection
- Port supported: SFP, SFP+, UTP, XFP and CX4

## MAIN APPLICATIONS

- Media converter for network backbone
- Connection between fiber to copper or fiber to fiber 10G Ethernet equipment
- Providing protections against lightning and static electricity for Ethernet network and the network main system
- Providing additional network management options
- Can be applied in Telecommunication room, R&D laboratory, Data center, etc










## MCS-2160 SPECIFICATION

Model	MCS-2160	
Slot	16 Slots for Installing XC Series Module Cards	
Dimension	441 mm x 310 mm x 88 mm	
Temperature	➤ Operating: 0°C ~ 40°C (32°F ~ 104°F)	➤ Storage: 0°C ~ 50°C (32°F ~ 122°F)
Humidity (non-condensing)	➤ Operating: 0% ~ 85% RH	➤ Storage: 0% ~ 85% RH
Built-in Sensors	Detecting system temperatures, rotation speed of fans, and system voltage	
Power Module		
Model		
	XCP-AC-300	XCP-DC-300
Power Source	➤ 300W AC Redundant SPS (Vin 90~240VAC)	➤ 300W DC Redundant SPS (Vin 36~72VDC)
Power Jack	Male IEC 320 Receptacle	3 Terminal Connectors
FAN Module		
Model		
	XC-SFAN	XC-RFAN
Optional Fan Tray		
Model		
	MCS-FANT-5	
Power Source	2 Mini-DIN 9-Pin Ports or 1 12V DC Power Jack	
Dimension	441 mm x 310 mm x 29 mm	



## XC SERIES MODULE CARDS SPECIFICATION

Model								
Module Card								
		XC-7S81	XC-8S22	XC-8S23	XC-8S82	XC-8S62	XC-8S33	XC-8S83
Interface Ports								
Interface	Port A	RJ45	SFP+	SFP+	RJ45	CX4	XFP	RJ45
	Port B	SFP	SFP+	XFP	SFP+	SFP+	XFP	XFP
Maximum Data Transfer Rate		1000 Mbps	10 G	10 G	10 G	10 G	10 G	10 G
Ethernet Mode		1000Base-T 1000Base-X	10GBase-LR 10GBase-SR	10GBase-LR 10GBase-SR	10GBase-LR 10GBase-SR 10GBase-T	10GBase-LR 10GBase-SR 10GBase-CX4	10GBase-LR 10GBase-SR	10GBase-T 10GBase-LR 10GBase-SR
Jumbo Frame		Available						
System Control								
System Control		➤ Transceiver Power ON/OFF ➤ Selectable Auto/Force Media Type ➤ System Upgrade (F/W, FPGA)			➤ Link Connection Mode: Slave/Segment ➤ Loopback*			
Device Status Report								
Status Report		➤ Information ➤ Link Status ➤ Temperature Detection			➤ Module Detection ➤ Fiber Module Detection ➤ Transceiver overloading			
MIB Counter Report *								
Counter Report		➤ Packet ➤ Broadcast packet ➤ Packets of 64 Bytes ➤ Packets of 128~255 Bytes ➤ Packets of 512~1023 Bytes ➤ Unicast packet ➤ CRC Error ➤ Under size packet			➤ Byte ➤ Pause Frame ➤ Packets of 65~127 Bytes ➤ Packets of 256~511 Bytes ➤ Packets of 1024~1518 Bytes ➤ Multicast packet ➤ IP Checksum Error* ➤ Over size packet			

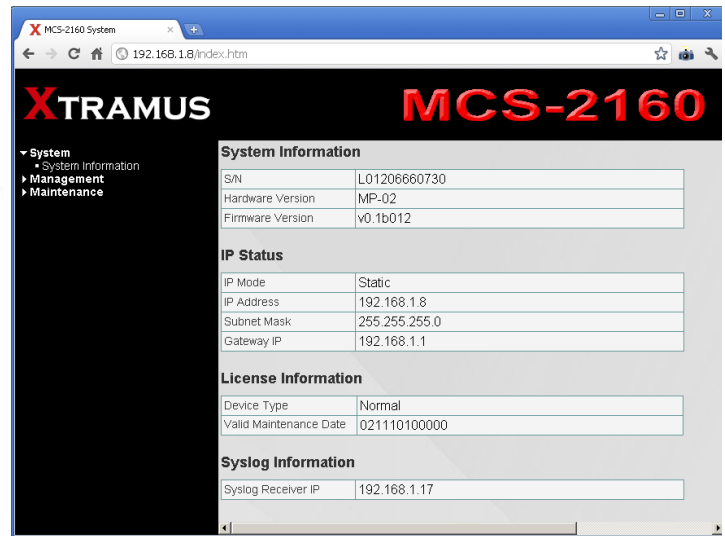
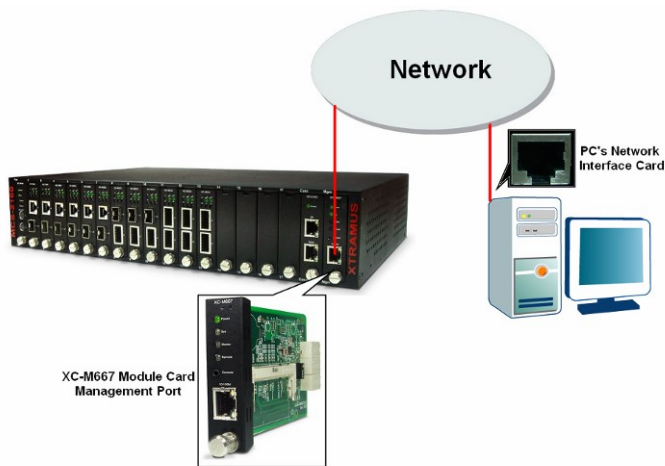
\*XC-7S81 Module Card does not support Loopback and IP Checksum Error functions.



## MANAGEMENT WEBPAGE

MCS-2160 is embedded with a Management Webpage, and can be accessed by connecting XC-M667's RJ45 Port to the network which your PC is connected to, as shown in the figure down below.

MCS-2160's Management Webpage allows users to configure test parameters, access counters, make system settings and upgrade system firmware/FPGA.



## RELATED PRODUCTS

### XC Series Module Cards

Module Cards for MCS-2160 Chassis



### MCM Series Standalone Media Converter

Standalone Media Converter with Various Interfaces



## CONTACT INFORMATION

Website: [www.xtramus.com](http://www.xtramus.com)  
E-mail: [Sales@xtramus.com](mailto:Sales@xtramus.com)  
          [TS@xtramus.com](mailto:TS@xtramus.com)  
TEL: +886-2-8227-6611  
FAX: +886-2-8227-6622